

Devon Schools Athletics Association
South West Schools Cross Country Championships
Saturday 2nd February 2019
Bath Racecourse

Notes for Athletes and Parents/Guardians

Travel Arrangements

There will be **one coach** travelling from Exeter to Bath but athletes will be allowed to make their **own travel arrangements** **BUT** this must be indicated on the return form attached.

Car parking will be **busy** so please allow plenty of time to get there and parked! n.b There will be a £3.00 parking fee per car.

The **Devon** teams will be walking the course as soon “**we**” arrive (11:00amish) – please **report** to the **Devon Schools meeting point** which will be in the “**Team Base**” - **Upstairs Balcony Lindridge Stand** above FOOD and Drink on the map attached (NEW Bath Racecourse map on the website) and are intending to walk the course at **MIDDAY!!**

Coach Travel

Meet: 9.00am Exeter Moto Services (Coach Parking entrance) or 9:30am Tiverton Services J27 M5

Return: 5.30pmish Exeter Moto Services

Seatbelts **MUST** be worn at all times during the journey

Cost: £15.00 which must be returned with the reply slip (cheques made payable to **Devon Schools Athletics Association** please)

Kit: You will be issued with a **Devon Schools Vest** on the day (please make sure you have put your size on the return form) and which **MUST** be returned to your age group team manager **BEFORE** you leave. Please note you will need to bring your own **BLACK** shorts/leggings at this event and you may wish to wear under armour in Black, White or Red!

It is advisable to arrive changed in warm clothing as changing facilities will be busy.

Do not forget **8 safety pins** and something suitable to walk the course in. (The course is suitable for Spikes – bring different length “spikes” depending on course and weather conditions on the day)

Food and Drink: There will be facilities to buy food and drink. It is advisable to eat 2 -3 hours before your race.

Race Details: The first race is due to start at 1.30pm – please see attached information

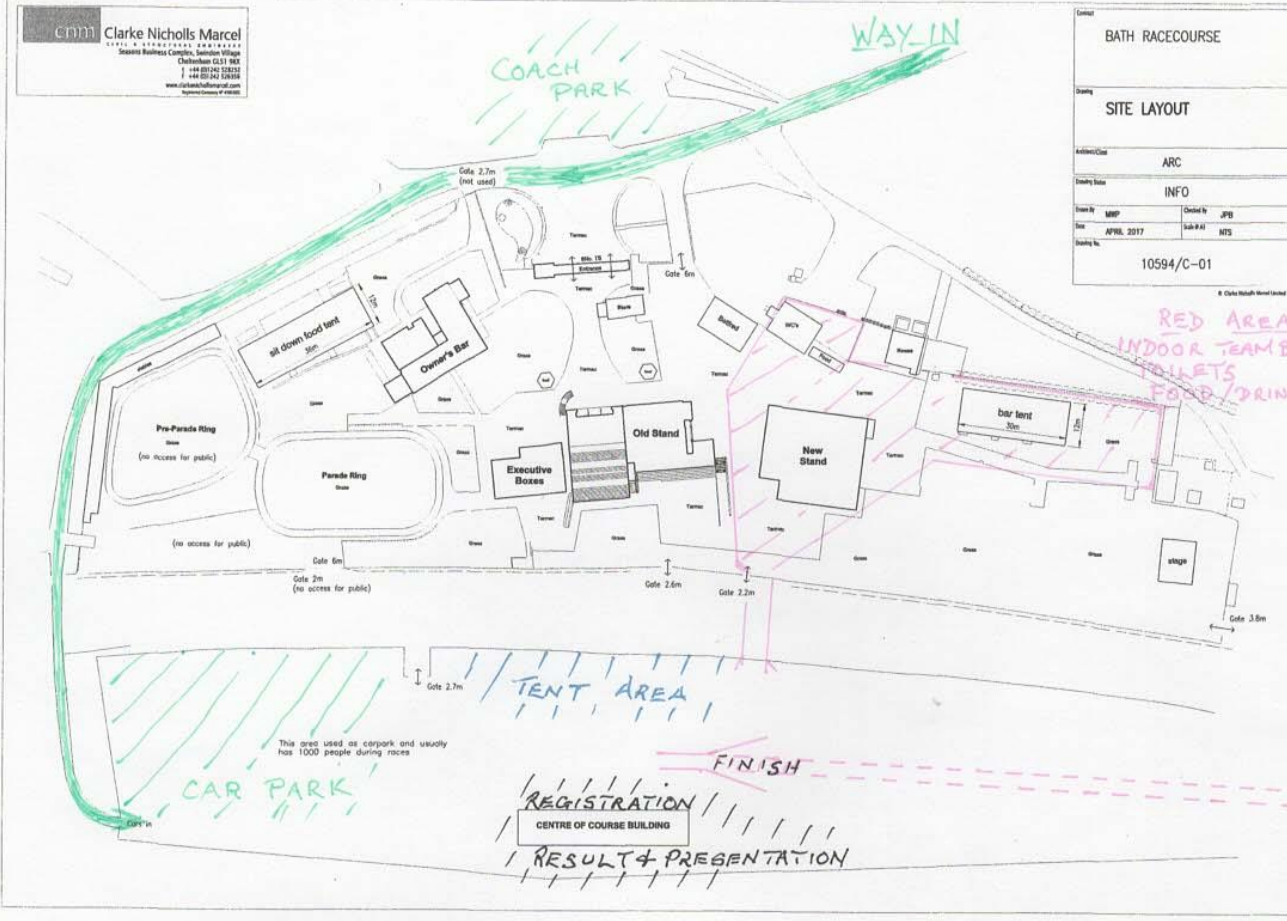
Spectators: We welcome your family and friends to come and support you and the Devon team!

Don't forget to check our webpage for more details etc

www.devonschoolsathletics.org

cnm Clarke Nicholls Marcel
 CONSULTING ENGINEERS ARCHITECTS
 144 BRIDGE STREET
 CHELSEA LONDON SW3 3LD
 T +44 (0)20 7493 1232
 F +44 (0)20 7493 1238
 www.clarke-nicholls-marcel.com
 Registered Company # 268385

| | |
|-----------------|------------|
| BATH RACECOURSE | |
| SITE LAYOUT | |
| Address/Code | ARC |
| Building Name | INFO |
| Drawn By | MMF |
| Checked By | JPS |
| Date | APRIL 2017 |
| Sub-PAI | NIS |
| Building No. | 10594/C-01 |



South West Schools Cross Country Championships – Course Map



- 1.30pm Senior B 7,300m 1 Medium + 2 Small (A-B-C-D-R-E-F-G-I-J) +(A-B-C-D-R-E-F-J)+ (A-B-C-D-R-E-F-J- FINISH.)
- 1.35pm Year 7 Girls 2,200m 1 Small , (A-B-C-D-R-E-F-J - FINISH.)
- 1.55pm Senior Girls 4,400m 2 Small, (A-B-C-D-R-E-F-J)+(A-B-C-D-R-E-F-J FINISH)
- 2.20pm Year 7 Boys 3,000m 1 Medium , (A-B-C-D-R-E-F-G-I-J- FINISH)
- 2.40pm Junior Girls 3,400m 1 Large (A-B-C-D-R-E-F-G-H-I-J- FINISH)
- 3.00pm Junior Boys 4,400m 2 Small (A-B-C-D-R-E-F-J)+(A-B-C-D-R-E-F-J- FINISH)
- 3.20pm Inter Girls 3,800m 2/3 Small + Small (A-B-C-D-R-A-B-C-D-R-E-F-J - FINISH)
- 3.40pm Inter Boys 5,960m 1 Large , 1 Small ((A-B-C-D-R-E-F-G-H-I-J) + (A-B-C-D-R-E-F-J FINISH)